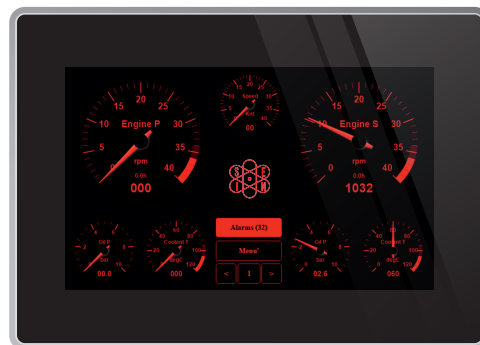




NEW



Descrizione / Description

Made in Italy

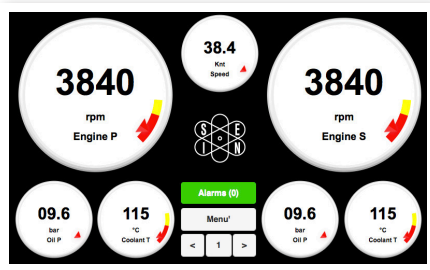
Sistema di monitoraggio e controllo ad altissime prestazioni espressamente progettato per uso navale, professionale e diporto. Offre un nuovo display touch screen da 7" ottimizzato per la visibilità al sole, un'estetica rinnovata e tante nuove possibilità di connessione a dispositivi di bordo e portatili. L'elettronica innovativa "Flexible Hardware" garantisce prestazioni elevate e l'acquisizione diretta di tantissimi sensori di misura senza bisogno di convertitori di segnale. La presenza di tre porte CAN Bus J1939, una porta rete LAN ed una uscita NMEA2000 compatibile lo rendono lo strumento perfetto per interfacciare sistemi di navigazione multifunzione. Funzionalità di registrazione dati con memoria interna SD. Lo strumento può essere personalizzato e programmato mediante interfaccia LAN, WiFi ed USB.

High performance monitoring and control system specifically designed for naval, professional and pleasure boats applications. It offers a new 7" touch screen display optimized for sun visibility, a new design and many possibilities of connection to on-board apparatus and portable devices. The innovative "Flexible Hardware" electronics provides direct acquisition of many measurement sensors without additional signal converters. Three CAN Bus J1939 ports and one NMEA2000 compatible output make it the perfect device to use with multifunction navigation systems. Datalogger functionality with internal SD card. It can be customised and programmed via LAN, WiFi and USB interface.

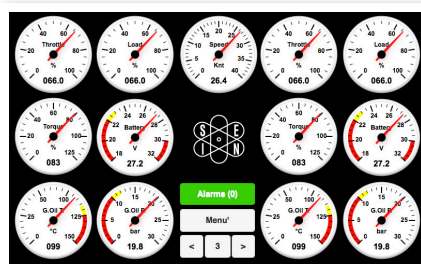
Caratteristiche tecniche / Technical features

Schermo / Display	7" TFT LCD, 800 x 480 pixel, high brightness 1000cd, antiglare
Touch screen	Capacitive
Processore e memoria / CPU and memory	Advanced Hybrid CPU Dual Cortex A9 + FPGA, 1 GB RAM DDR3
Memoria dati / Data memory	128MB Flash + 8GB SD card
Ingressi-Uscite / Inputs-Outputs	No.8 Analog inputs 0-300ohm No.16 Analog inputs 0-10V / 4..20mA No.8 Analog inputs NTC 0-100Kohm with autorange No.8 Analog thermocouple inputs No.6 Analog inputs 0-36V No.3 Frequency inputs W alternator / pickup No.8 Digital ON/OFF inputs, active to ground No.8 Relay outputs, single contact max 500mA
Porte di comunicazione / Communication ports	No.4 CAN Bus 2.0B - No.1 Ethernet - No.1 Wifi 802.11bgn - No.1 USB OTG - No.1 NMEA0183 - No.1 RS232
Alimentazione / Power supply	9-36 V - 500mA average
Dimensione / Dimension	200 x 143 x 76.1 mm
Ambiente / Environment	0 +55 °C (-20 +70 °C a richiesta / on demand) - IP65

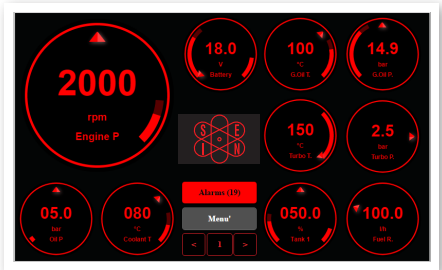
UNS10195 - 7" touch screen monitoring and control system



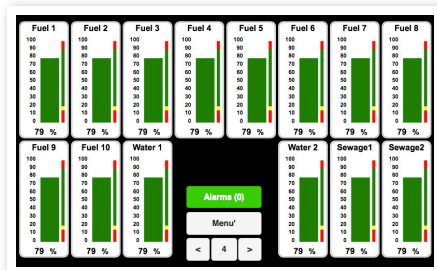
Monitoraggio fino a quattro motori
Monitoring up to four engines



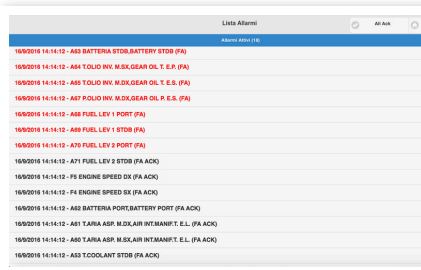
Pagine personalizzabili con strumenti analogici
Customisable pages with analogue instruments



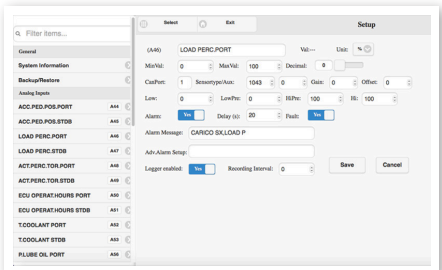
Pagina di strumenti digitali con visione notturna
Night vision of digital instruments page



Monitoraggio livelli e sentine con indicatori a barra
Monitoring levels and bilges with bar indicators

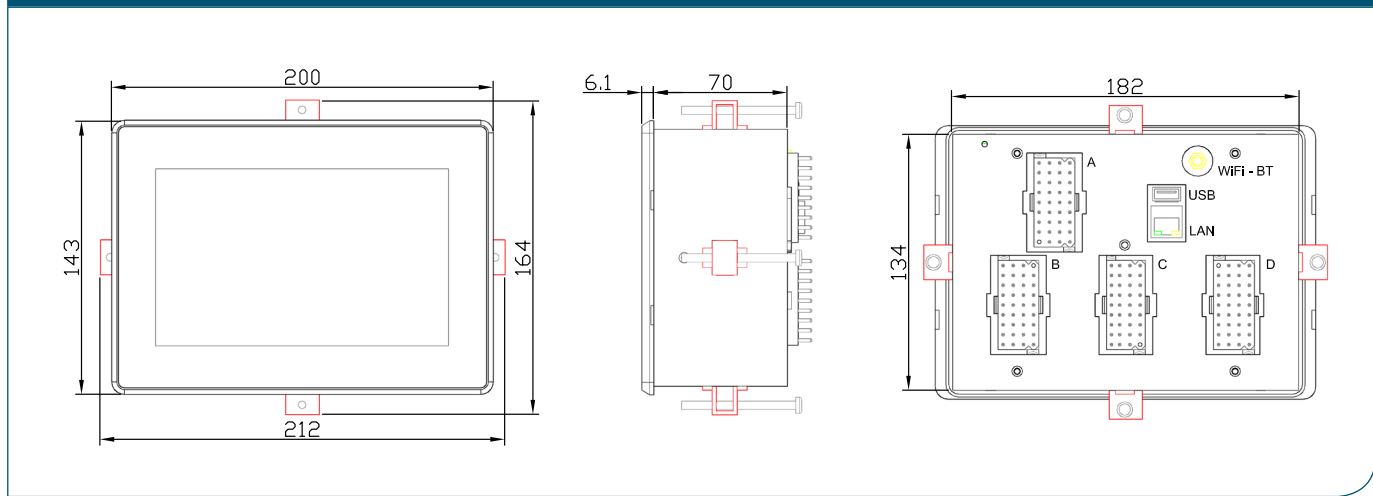


Lista allarmi
Alarms list



Configurazione sistema
System configuration

Disegno tecnico con connettori standard / Technical drawing with standard connectors



Disegno tecnico con connettori M12 / Technical drawing with M12 connectors

